

# Increase Productivity, Safety and Tool Durability with Innovative Tooling for Wireline | TCP | Oilfield

Yellow Jacket's innovative designs increase productivity, safety and product life. Smart improvements bring value to the user and operator, while remaining conveniently compatible with most industry standard components and accessible with distribution points in many of the major U.S. oil and gas plays.

Experience how your operation could benefit from Yellow Jacket's industry leading improvements.



[www.ghdv.com](http://www.ghdv.com)

G&H Diversified Manufacturing, the parent company of Yellow Jacket, has provided advanced manufacturing services to the energy and other industries since 1958. G&H has over 200,000 sq. ft. of factory space with plants located in Houston, Texas and Indianapolis, Indiana and employs over 200 highly-qualified individuals. An ISO 9001:2008 certified manufacturer, G&H is committed to achieving the highest quality standards.

In Yellow Jacket oil tools, G&H provides this quality combined with innovative designs that improve productivity, safety and durability.

**MANUFACTURED BY G&H - LEADERS IN OILFIELD FABRICATION**

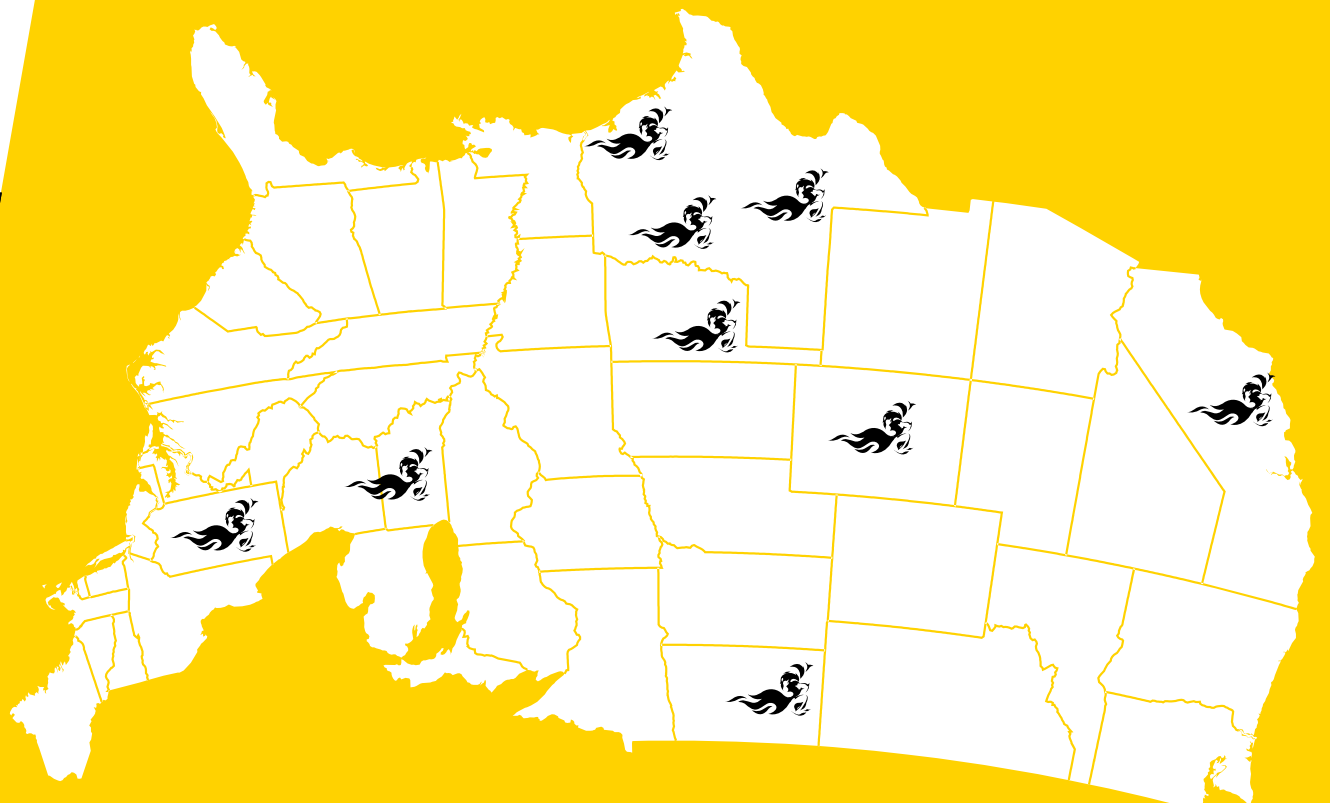
11660 Brittmoores Park Dr.  
Houston, TX 77041  
800-922-4223  
[info@yjtools.com](mailto:info@yjtools.com)  
[www.yjtools.com](http://www.yjtools.com)



\*Coming in 2014: California and Colorado

800-922-4223 Houston, TX 77041	<b>Dickinson, ND</b> 11126 30J St. SW Dickinson, ND 58601	600 S. E. 6th Ave. Mineral Wells, TX 76067	406 48th St. Woodward, OK 73801
11660 Brittmoores Park Dr. Global Headquarters Houston, TX 77041	<b>Connellsville, PA</b> 381 Hickory Square Rd. Connellsville, PA 15425	1705 Midwest Blvd. Indianapolis, IN 46214	4608 S. County Rd. #1310 Odessa, TX 79765

## CONVENIENTLY LOCATED YELLOW JACKET DISTRIBUTORS



DISTRIBUTION IN MAJOR U.S. SHALE PLAYS



**LEADERS IN OILFIELD TOOLS**





# LEADERS IN OILFIELD TOOLS

## PART SIZE GUIDE

## in part number indicates size

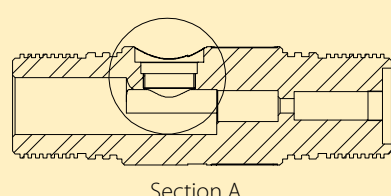
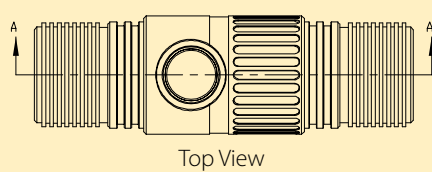
## IN PART NO.

FRACTION	DECIMAL	## IN PART NO.
1 9/16"	1.563"	15
1 11/16"	1.688"	16
2"	2.000"	20
2 3/8"	2.375"	23
2 1/2"	2.500"	25
2 3/4"	2.750"	27
3 1/8"	3.125"	31
3 3/8"	3.375"	33
4 1/4"	4.250"	42

STYLE	DESCRIPTION	PART #
<b>SUBS</b> Available in: 2 3/4", 3 1/8" & 3 3/8"  Y in Part # indicates Port Configuration: A, C, D, E, or G  *Available Q2 2014	<b>TOP</b>	Spring Boot Style, Fluted S.TS.##.A
		Teardrop Seal Block Style, Fluted S.TS.##.B
		JRC / SIE Style, Fluted S.TS.##.C
		RTG, Dart Style, Bolted, Go Box* Sizes: 1 9/16" or 2" S.TS.##.A
		RTG, W/ Shelf, Bolted, Go Box* Sizes: 1 9/16" or 2" S.TS.##.B
	<b>BOTTOM</b>	Bull Plug, Solid, Fluted S.BP.##.A
		Bull Plug, 1 5/8" - 6 Acme Blind Thread, Fluted S.BP.##.B
		Bull Plug, 1 5/8" - 6 Acme Thread, Through Hole, Fluted S.BP.##.C
	<b>SWITCH</b>	Port Configurations: A, C, D, E, G S.SS.##.Y
	<b>BLAST SLEEVES</b>	With Through Hole, Port Configurations: A, C, D, E, G, Fluted S.BS.##.Y
	With EB Gland, Port Configurations: A, C, D, E, G, Fluted S.BSS.##.Y	
<b>ORIENTING*</b>	Port Configurations: A, C, D, E, G, Fluted S.OS.##.Y	
	Lock Ring, Knurled S.LR.##.A	
	Lock Ring, Stand Off, Knurled S.LR.##.B	
<b>TANDEM</b>	5/8" Through Hole, Fluted S.TD.##.A	

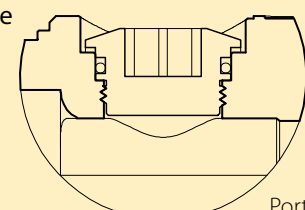
### YELLOW JACKET SWITCH SUB

- With **FLUTING** pipe wrenches grip every time ensuring maximum **PRODUCTIVITY & SAFETY**
- 4340 heat-treated body
- All ports available
- .A - Yellow Jacket Port
- .C - Grizz Port
- .D - 5" Port
- .E - 3 1/8" and 4" Port
- .G - Large Titan Port



### YELLOW JACKET PORT PLUG

- 4340 heat-treated body for extended life
- **TWO SEALING SURFACES**, flat gasket and 218 O-ring
- Both seals are protected from the blast
- Ledge to shoulder design protects from over tightening
- Square lug fits 1/2" drive



Priced competitively  
Short lead times on most sub designs

### CABLE HEADS

\*Available Q2 2014

<b>ASSEMBLY*</b>	1 1/2" Cone Style Cable Head, 7/32" - 1/4" Line Wire CH.150.025.A
	1 1/2" Cone Style Cable Head, 9/32" - 5/16" Line Wire CH.150.031.A
<b>BRASS CONE*</b>	1 1/2" Cable Head, Line Sizes: 7/32", 1/4", 9/32", 5/16" CH.BC.###.A.A
	1 1/2" Cable Head, 9/32" Line CH.BC.028.A
	1 1/2" Cable Head, 5/16" Line CH.BC.031.A
<b>BRASS WASHER*</b>	1 1/2" Cable Head CH.BW.150.A

### = Size  
Example 025 = 0.25 (1/4")

### WEIGHT BARS

Available in: 3', 5' and 7'

\*Available Q1 2014

<b>OVER THE LINE*</b>	Length: 3' Diameter: 3 1/8" WB.OTL.31.3
	Length: 5' Diameters: 1 5/8", 2", 2 3/4" or 3 1/8" WB.OTL.##.5
	Length: 7' Diameters: 1 5/8", 2", 2 3/4" or 3 1/8" WB.OTL.##.7
	Cable Head Housing Diameter: 2 3/4" or 3 1/8" WB.CHH.##.A
<b>OVER THE CABLE HEAD*</b>	Length: 3' Diameter: 3 1/8" WB.OTCH.31.3
	Length: 5' Diameter: 3 1/8" WB.OTCH.31.5
	Length: 7' Diameter: 3 1/8" WB.OTCH.31.7
<b>FISH NECK*</b>	Fish Neck WB.FN.A
	Fish Neck Insert WB.FNI.A

### JUNK BASKETS

Y in part # indicates Sub Style configuration: A, B, C, D, E

- Sub Styles
- A - 1 5/8" - 6 Acme
  - B - 2 3/4" - Quick Change
  - C - 3 1/8" - Quick Change
  - D - JRC Quick Change
  - E - 3/4" Sucker Rod

\*Available Q1 2014

<b>JUNK BASKETS</b>	JUNK BASKET #5 with 1 3/16 - 12 UN GO Top Sub JB.##.Y
<b>## = 05, 10, 15, 20 OR 25</b>	JUNK BASKET #10 - #25 with 1 5/8 - 6 Top Sub JB.##.Y
	Basket Assembly, Steel Stainless Screen JB.BA.##.A
<b>GAGE RINGS</b>	#10 - OD Sizes from 3" to 7 1/2", Fluted JB.GR.10.####
	#20 - OD Sizes from 4" to 8 1/2", Fluted JB.GR.20.####
	#25 - OD Sizes from 6" to 8 1/2", Fluted JB.GR.25.####

#### = Size  
Example 3500 = 3.500"

### DUMP BAILERS

Available in: 3 1/8" or 4 1/4"

\*4 1/4" Available Q1 2014

<b>SUBS</b>	Top Sub, Fluted* DB.TS.##.A
	Window Sub*, Fluted DB.WS.##.A
	Bottom Sub - Plain Bottom, Fluted* DB.BS.##.A
<b>BAILER JOINTS</b>	5' Stainless Tube, Welded, Fluted* DB.BJ.##.05.A
	10' Stainless Tube, Welded, Fluted* DB.BJ.##.10.A

### QUICK CHANGE

\*Available Q1 2014

<b>QUICK CHANGE*</b>	GO Style Sizes: 2 3/4" or 3 1/8", Fluted QC.##.A
	JRC / SIE Style, 3 1/8", Fluted QC.31.B
<b>FIRING BLOCK*</b>	Spring Boot Style Sizes: 2 3/4" or 3 1/8" QC.FB.##.A
<b>SEAL BLOCK</b>	Teardrop Contact Style Sizes: 2 3/4" or 3 1/8" QC.SB.##.A

### SETTING TOOLS

\*Available Q1 2014

<b>SETTING TOOL*</b>	#10 Baker Style, Fluted ST.10.A
	#20 Baker Style, Fluted ST.20.A
<b>BLEEDER DISK RETAINER</b>	Fine Thread, 2 Prong ST.BDR.F.2
	Coarse Thread, 4 Prong ST.BDR.C.4
<b>FIRING HEADS*</b>	Setting Tool Firing Head, #10, 1 3/16 - 12 Thread ST.FH.10.A
	Setting Tool Firing Head, #20, GO QC Thread ST.FH.20.A
	Plug Shoot Firing Head, #10, 3 1/8", Fluted ST.PSFH.31.10.A
	Plug Shoot Firing Head, #20, 3 1/8" and 3 3/8", Fluted ST.PSFH.##.20.A

### CONSUMABLES

\*Available Q1 2014  
\*\* Viton Available Upon Request

<b>PORT PLUG</b>	1 3/8" YJ Port, Flat Gasket, 218 O-Ring, Metal Ledge S.P.1375.A
	1 1/2" Grizz Port, 216 O-Ring S.P.1500.C
	1 3/8" Titan Port, 217 O-Ring S.P.1375.G
<b>FLAT GASKETS</b>	Flat Gasket, 1.734 x 1.484 x .063, 90 Duro, Nitrile** FG.A.90.N
<b>O-RINGS</b>	Parker 218 O-Ring, 90 Duro, Nitrile** OR.218.90.N
<b>PSFH REDRESS KIT</b>	Plug Shoot Firing Head Redress Kit ST.PSFH.RDK.A

### HAND TOOLS

Y in part # indicates Pin Configuration  
A - Two Pin/Fine Thread  
B - Four Pin/Coarse Thread

\*Available Q2 2014

<b>BLEED OFF WRENCH</b>	Full Assembly HT.BOW.Y
	Replacement Tip - Coarse Thread HT.BOW.CI
	Replacement Tip - Fine Thread HT.BOW.FI
	Replacement Tip - Fine Thread, 2 Pin HT.BOW.F.2P
	Replacement Tip - Coarse Thread, 4 Pin HT.BOW.C.4P
<b>HAMMER WRENCH</b>	Sizes from 1 1/16" to 2 15/16" HT.HW.####.A
<b>CUTTER/CRIMPER</b>	Cord Cutter Cap Crimper Combo* HT.CCC.A
<b>GUN TONG</b>	Sizes from 2 3/4" - 3 3/8" * HT.GT.##.A



## CONVENIENTLY LOCATED YELLOW JACKET DISTRIBUTORS

**Houston, TX**  
Global Headquarters  
11660 Brittmoore Park Dr.  
Houston, TX 77041  
800-922-4223

**Connellsville, PA**  
381 Hickory Square Rd.  
Connellsville, PA 15425

**Indianapolis, IN**  
1705 Midwest Blvd.  
Indianapolis, IN 46214

**Odessa, TX**  
4608 S. County Rd, #1310  
Odessa, TX 79765

**Dickinson, ND**  
11126 30 J St. SW  
Dickinson, ND 58601

**Mineral Wells, TX**  
600 S. E. 6th Ave.  
Mineral Wells, TX 76067

**Woodward, OK**  
406 48th St.  
Woodward, OK 73801

\*Coming in 2014: California and Colorado